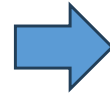
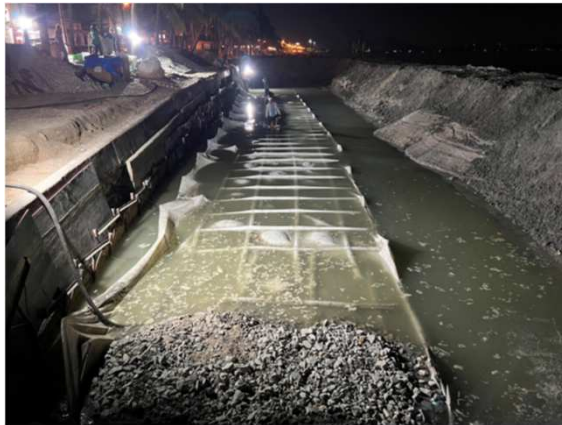


LFR method

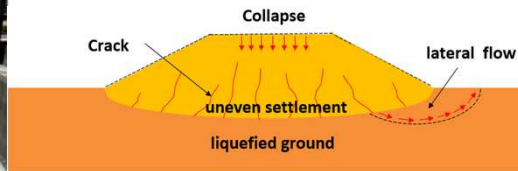
ASHIMORI INDUSTRY Co.,LTD.
TOKUYAMA Mtec Corp.



Bangsaen Beach improvement works



House foundation



Road embankment
earthquake
countermeasures

Overview

The LFR method is a surface improvement method for soft ground. It was installed in 2022 to prevent the revetment from subsiding at Bang Saen Beach. It is also used for residential foundations in Japan. The technology developed in Japan, a country prone to earthquakes, can also be used in Thailand.